

# MONTHLY MEMBERSHIP PROGRESS REPORT

District 4 C1

Results as of: 12/31/2023

GMT:

LOCATION CALIFORNIA

GMT CA

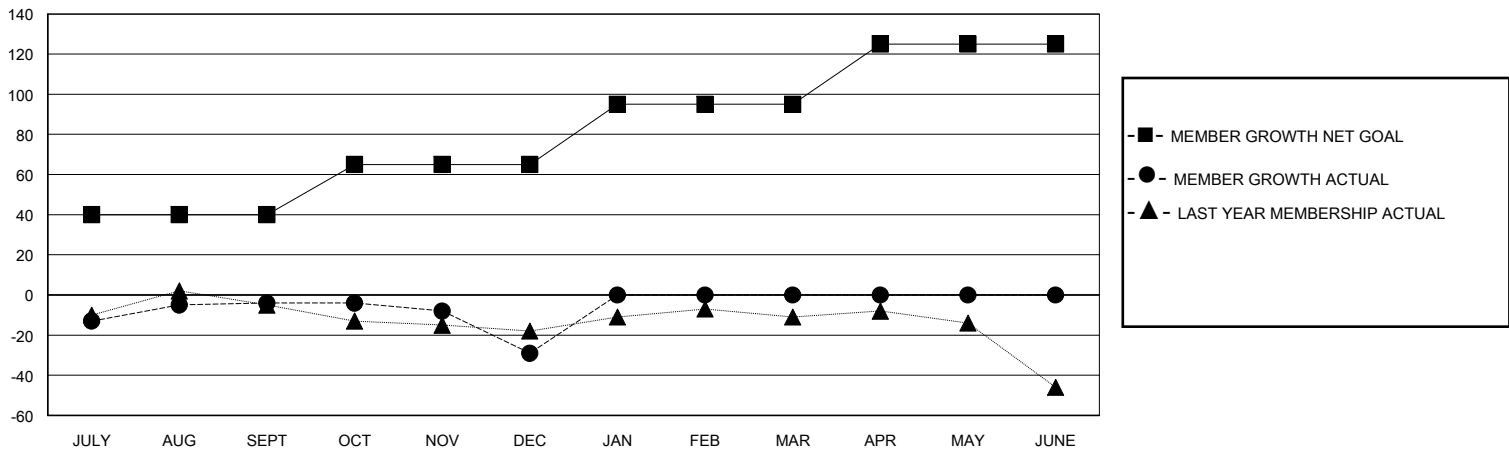
Clubs			
RESULTS FOR 2023-2024			
QUARTER	NEW CLUB GOAL	NEW CLUBS	DROPPED CLUBS
JULY/AUG/SEPT	0	0	0
OCT/NOV/DEC	0	0	1
JAN/FEB/MAR	1	0	0
APR/MAY/JUNE	0	0	0

Members			
RESULTS FOR 2023-2024			
QUARTER	MEMBER GROWTH NET GOAL	MEMBER GROWTH ACTUAL	DROPPED MEMBERS ACTUAL (including transfers)
JULY/AUG/SEPT	40	32	28
OCT/NOV/DEC	25	16	38
JAN/FEB/MAR	30	0	0
APR/MAY/JUNE	30	0	0

GOALS AND ACTUAL NEW CLUBS CUMULATIVE



GOALS AND ACTUAL MEMBERS CUMULATIVE



DROPPED CLUBS: 1

17 CLUBS OF 36 ADDED 1 OR MORE NEW MEMBERS

GENDER DISTRIBUTION

MALE 538 (64.12%)  
FEMALE 301 (35.88%)

DROPPED MEMBERS

DECEASED	3
CLUB CANCELLED	9
OTHER	54
<b>TOTAL</b>	<b>66</b>

[CLICK HERE FOR CUMULATIVE MEMBERSHIP DATA](#)

TOTAL FAMILY UNIT MEMBERS	170
FAMILY MEMBERS PAYING HALF DUES	88